

英語版
English

鹿児島市

Tourism Guide

KAGOSHIMA CITY

Welcome to
my hometown,
Kagoshima!

Kagonma is
full of fun!

Jambo mochi
not Jumbo-mochi!

Shirokuma
shaved ice

Let's have
fun at the
Zoo!

Kagoshima
ramen noodles

The onsens
are waiting
for you!

World Cultural
Heritage Site

Satsuma
Kiriko
Cut-Glass

Have a nice ride!

Imojochu
(genuine shochu
distilled from
sweet potatoes)

Enjoy your visit!

Lots of
places to see!

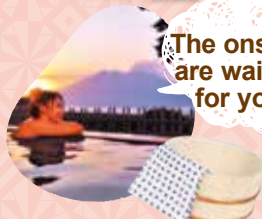
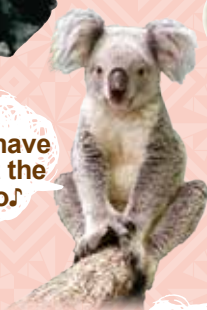
Don't forget the
aquarium!

Come and visit
Sakurajima
volcano!

Get all the tourist information on Kagoshima City here!
<http://www.kagoshima-yokanavi.jp/english/>



Kagoshima City Tourism



Kagoshima is all about **Sakurajima!**



You can enjoy this Earth park in a dynamic way.
Sakurajima Kinko Bay Geopark

Approx. 15 min from Kagoshima
Port by Sakurajima Ferry



To see

Geopark is a park of the Earth.
There are natural attractions that
have been created over millions of
years. Feel the power of the Earth!



Yunohira Observatory

The highest spot where
public access is permitted
(373m, 4th station of
Sakurajima). What a great
view!!



Kurokami Buried Shrine Gate

The great Taisho eruption
of 1914 nearly covered this
Torii with 2 meters of ash.



Sakurajima Yogan Nagisa Park Footbath
It is approx. 100 m long, one of the longest
footbaths in Japan. Enjoy this hot spring and
relax with the view of Sakurajima.



Arimura Lava Observatory

Both the 1914 Taisho lava and 1946 Showa lava
fields can be seen from this view spot. Please
check the different vegetation stages too.



Kurokami Viewing Spot

The best location to observe the Showa
Lava crater.

Ferry used for excursion cruises
This 50-minute cruise is best suited for
those who wish to enjoy the attractive
views of Sakurajima and Kinko Bay
from the ocean.

You can discover
the fascination of
Sakurajima together
with a guide.

Sakurajima Volcano Guided Walk

(Please make your reservation two
days in advance.)

You can enjoy
making your
own footbath by
digging in the
sand of the beach.



Footbath making Activity

(Please make your reservation two days in
advance. ※)

You can enjoy
making a sand
picture using
volcanic ash.

Volcanic ash art activity

(Reservation on the day is available.)

You can enjoy
assembling a
Sakurajima
lava kiln and
baking your own
handmade pizza
on it.



Making a pizza kiln from lava

(Please make your reservation one
week in advance.)

Viewing
Sakurajima
from the sea



Kayak Activity

(Please make your reservation two
days in advance.)

※ Effected by weather and
tide conditions.
Dates and times of
operation may be limited

To touch

There are many more activities.
Be active!

Tips!

Sightseeing bus

The Sakurajima Island View bus takes you around many
of the top sightseeing spots of Sakurajima. The one day
passenger ticket and "Cute" pass are recommended for
those who want to get off and explore themselves.



World Cultural Heritage Site “Sites of Japan’s Meiji Industrial Revolution”

The birthplace of Japan’s modern industries

Shimadzu Nariakira, the brilliant lord of the Satsuma Domain, felt a sense of crisis because of the advancement of western powers towards Asia during the Bakumatsu period. In an attempt to modernize Satsuma’s military and industries, he tried to research and develop technologies and manufacture goods in various fields. This project, known as the Shuseikan Project, was large-scale and is regarded as the predecessor to the industrial revolution of Japan. This location is listed as a World Cultural Heritage Site under the designation, “Sites of Japan’s Meiji Industrial Revolution: Iron and Steel, Shipbuilding and Coal Mining.”



Become a Samurai Warrior at Sengan-en! (Reservation Required)



To feel



Sengan-en

Originally a second residence of the Shimadzu clan. Enjoy an amazing and expansive view of the volcano and Kinko Bay from the stately home and gardens while discovering the history and culture of the Shimadzu clan. Events are held in the gardens year-round.

Former Shuseikan



Former Kagoshima Foreign Engineer’s Residence (Ijinkan)

This building was built in 1867 as a residence for the British engineers who were invited to Kagoshima to provide technical guidance at the Kagoshima Spinning Mill, the first western style spinning mill in Japan. The significance and attractiveness of the World Heritage Site is introduced in an easy-to-understand manner.



Ruins of the reverberatory furnace (in Sengan-en)

At the reverberatory furnace, iron was melted to produce cannon. The stone foundation of the 2nd furnace, which was built with a traditional precise stone masonry technique of Satsuma in 1857, remains in Sengan-en.



Former Shuseikan Machinery Factory (Current Shoko Shuseikan Museum)

Completed in 1865, this is the oldest existing western style factory in Japan. Metal processing and ship repair works were conducted by using western machinery and steam engines. Currently, it is used as a museum where the history and culture of the Shimadzu clan as well as the Shuseikan Project are introduced.



Site of Terayama Charcoal Kiln

The kiln was built in order to manufacture white charcoal (known for its strong heating power) to supply fuel to the reverberatory furnace. The sturdy stone-made charcoal kiln remains as it was in its original state.



Sekiyoshi Sluice Gate of Yoshino Leat

The site of the water intake of the watercourse that was built to supply the water power necessary for driving machines at the Shuseikan factories. Water was taken in the upper stream of the Inari River, then traveled for approximately 7 kilometers through the watercourse constructed for this purpose.

Tips!

Shimadzu Satsuma Kiriko Glassworks

Satsuma Kiriko was developed as part of the Shuseikan Project. Visitors to the Shimadzu Satsuma Kiriko Glassworks can see the glass being made by highly skilled craftsmen, and admire the finished products in the gallery shop next door.



Zoo

The largest number of Koalas found in Japan! Hirakawa Zoological Park

This vast site, surrounded by the greenery of Kagoshima, is home to 1,000 animals of 140 different species. In addition to the popular koala and white tigers, there is plenty more to see including giraffes leisurely strolling around an area with a background view of Sakurajima Volcano.
<http://hirakawazoo.jp/>



The bus loop service in the zoo



Aquarium

Meet creatures of the southern ocean Ito World Kagoshima City Aquarium



One of the largest aquariums in Kyushu. You will find approximately 30,000 fishes of 500 varieties on display, with a focus on the marine life of Kagoshima. The whale shark and rays gracefully swimming in the Kuroshio Tank are exciting for everyone. Daily events with crowd participation such as the dolphin performance are well received.
<http://ioworld.jp/>

Tips!

A dolphin watercourse can be seen without entering the aquarium

Dolphins come into the watercourse in front of the aquarium every day. And, if you have a chance to see their performance, we guarantee you will be impressed. Please drop by this free-of-charge area if you are taking a walk in the area.



Museum of the Meiji Restoration



A sightseeing facility introducing the history of Kagoshima (then called Satsuma) and Japan during the Bakumatsu period. Historic heroes who supported the Meiji Restoration are also displayed. Movies, games and various other arrangements offer an easy-to-understand introduction to the history.

Open Top Bus



Kagonma Sora Bus is Kagoshima's first open top double decker bus. Enjoy dynamic views that can't be seen anywhere else.



Traditional Crafts

Souvenirs made with traditional craftsmanship that has been handed down over the years



Genuine Oshima silk pongee

Oshima Silk is produced after going through more than 30 complicated processes. Its special feature is the beauty created by thousands of splash weavings. The light weight and elasticity of this silk fabric are, among other reasons, why it is loved by so many people.



Satsuma Pottery

Originated in 1598 by Korean potters who accompanied Shimazu Yoshihiro to Kagoshima. "White Satsuma" was used by lords and its special feature is the vivid kannyu cracks. The "Black Satsuma", popularly used among common people, has an attractive jet-black sheen.



Satsuma Tin ware

In the Edo Period, tin was discovered and a tin mine was made on the outskirts of Kagoshima City. The beautiful and subdued sheen produced with traditional craftsmanship is quite worth seeing. These are popular items as mementos or as gifts.



Bamboo Products

Kagoshima is home to bamboo production. Making the best use of its elasticity and strength, a wide range of articles for daily use, including baskets, chopsticks, strainers and lunch boxes, are being produced. The simpleness that fits diversified lifestyles is another attraction of bamboo products.



Yaku Cedar Products

Yaku-sugi cedars have weathered hardships for more than 1,000 years on Yakushima, the island designated as a World Natural Heritage. The intricate year rings, indicating long life, is characteristic of Yaku cedar tea utensil and table products. Because of the high resin content, the wood is long-lasting. The more they are used, the more the tasteful elegance is revealed.

Satsuma Kiriko Cut-Glass

The gentle gradation of colored and clear glass known as "bokashi" is the defining characteristic of this refined crystal glass which was originally produced during the Edo period.



Gourmet

Enjoy Kagoshima's wonderful cuisine
In addition to Kurobuta pork and sweet potato
Shochu, we take pride in the fish of Kagoshima, as
it is a place surrounded by sea.

Shirokuma

Sweet shaved ice as
fine as snow, covered
with condensed milk,
various fruits, and
sweet beans.



Satsuma-age

Satsuma-age, deep-fried minced fish,
is also called "Tsuke-age". It is said that
this word derives from "Chikiagi", one of
the representatives of Ryukyu cuisine
introduced to Kagoshima in the 19th
century. This is the traditional fast food
in Kagoshima.



Kagoshima Wagyu Beef Kagoshima Kurobuta Pork Kurosatsuma-dori(black chicken)

"Kuro," meaning the black colour of the animal,
represents the top 3 meats of Kagoshima. The
prized Kuroushi beef was selected as Japan's #1
wagyu (Japanese beef) in 2018! Please try some
of the great standards of Kagoshima cuisine like
Kurobuta Tonkatsu 'pork cutlet' and shabu shabu,
local charcoal grilled chicken and chicken sashimi.



Honkaku Imojochu (genuine shochu distilled from sweet potatoes)
The term "Sake" refers to Imojochu in Kagoshima. Each distillery
has its own features. Please enjoy the subtle difference in offered
by traditional shochu brands.



Sakurajima radish and Sakurajima mini mandarin

The active volcano Sakurajima is
known as the place of origin for
the Sakurajima daikon, the world's
heaviest radish, and Sakurajima mikans,
the world's smallest mandarin oranges.



Sakurajima mini mandarin Soft Ice Cream

The popular local specialty,
Sakurajima Komikan
(orange) Soft Ice Cream,
offers a gentle flavor with
a fresh citric and slightly
sweet taste. It is perfect
as a dessert or snack.



Jambo Mochi and Karukan

"Jambo Mochi", glutinous rice cake dressed
with sweet sauce, is skewered on two
bamboo sticks representing the two swords
carried by samurai warriors. Karukan is a
white and smooth steamed sweet made of
high-quality yams. Both are representative
traditional sweets of Kagoshima.



Tips!

Sushi School

Join this sushi classroom to experience the whole sushi making process, from a sushi chef
cutting the entire fish to creating the sushi itself. You can even enjoy making and eating sushi
yourself. Have fun being a sushi chef for a day.
<http://www.kousei-grp.co.jp/sushischool>



There are many more places to see!

Tram

Kagoshima is
famous for trams.
There are special
sightseeing tram
services, too.



Yataimura

Located near Kagoshima
Chuo Station, you can enjoy
Kagoshima's cuisine at a
reasonable prices.

Tenmonkan

Tenmonkan is the
most prosperous area in
Kagoshima. You can enjoy
gourmet delights, shopping
and walking as you
feel the history.



Shochu Distillery / Karukan Factory

Factories of Shochu and Karukan
sweets are located in the
southern part of Kagoshima
City. Visitors can enjoy
free samples.



Meizanbori

The surrounding townscape
takes visitors back to the days
of the early Showa Period.
Meizanbori - a tourist hot spot
that is a blend of Old
and New.



Amami no Sato (featuring Oshima silk pongee)

The manufacturing process of
Oshima silk pongee can be seen
here. A hands-on dyeing activity
is available. The magnificent
garden representing Amami
culture is splendid.

Kagoshima City Map

Festivals / Events Calendar

Spring Events

- Spring Zoological Park Festival (Mar. to Apr.)
- The Cherry Blossom Lantern Festival (Apr.)
- Kagoshima Spring Festival Great-Han'ya (Apr. to May)
- A Touch of Napoli Festival (May.)
- Chuo Station Bar Festival (May.)

Summer Events

- Ogionsa Festival (Jul.)
- Sakurajima Kinko Bay Long-Distance Swimming Tournament (Jul.)
- Sakurajima Hinoshima Island Festival (Jul.)
- Tenmonkan Rokugatsudo yukata (kimono) Festival (Aug.)
- Sakurajima Evening Breeze Cruise (Aug.)
- Kagoshima Kinko Bay Summer Night Fireworks Display (Aug.)
- Kinko Bay Sea Breeze Festa (Sep.)

Autumn Events

- Kagoshima Jazz Festival (Sep.)
- Autumn Zoological Park Festival (Sep.-Nov.)
- Curry Festa (Oct.)
- Ohara Festival (Nov.)
- Shochu Street Festival (Nov.)
- Green Farm Satoyama Country Autumn Festival (Nov.)

Winter Events

- Running Sakurajima Event (Dec.)
- Tenonkan Millionation (Jan.)
- Pro Sports Spring Camp (around Feb.)
- Kagoshima Marathon (Mar.)

Ohara Festival

Kagoshima Kinko Bay Summer Night Fireworks Display

Kotsuki River Bank

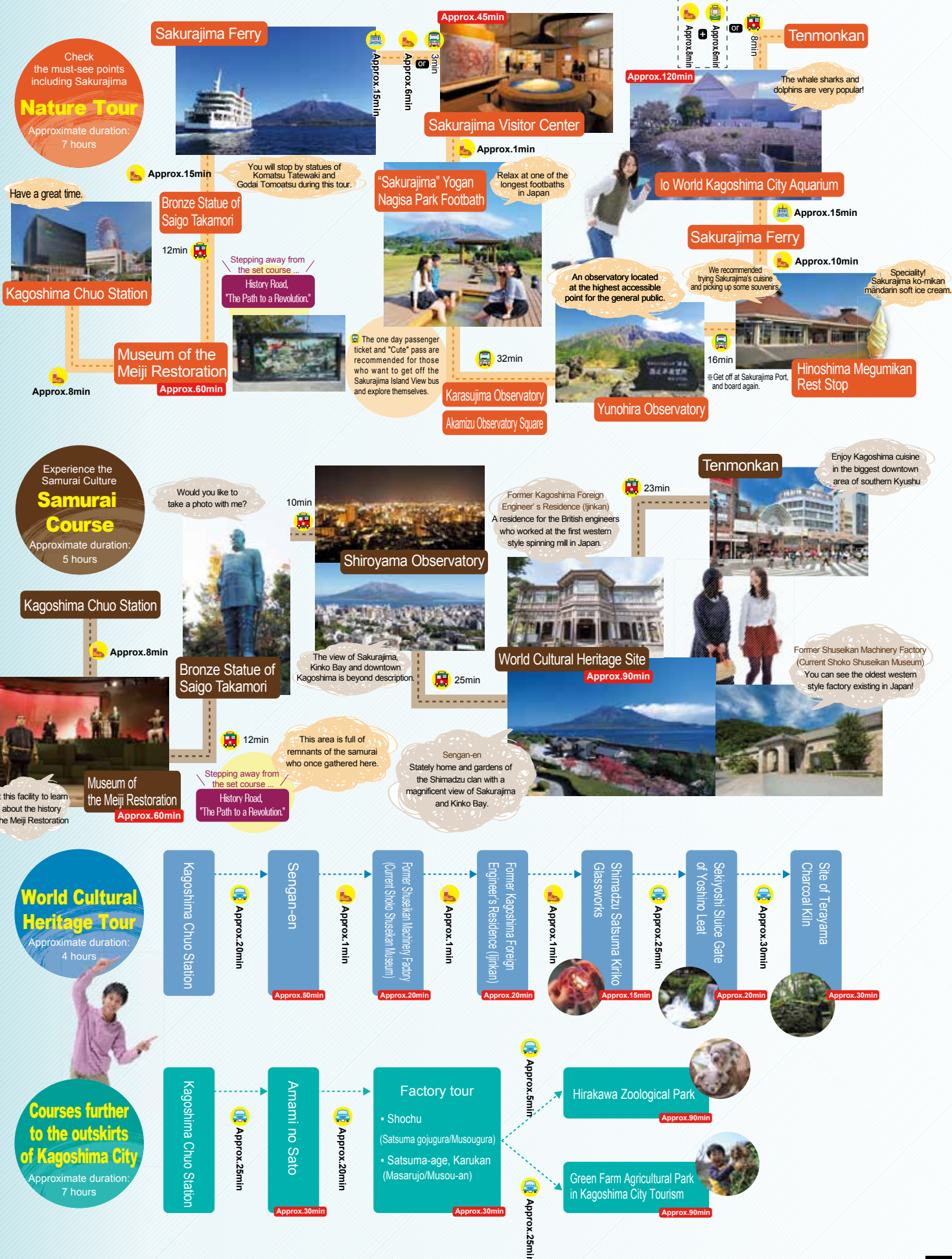
Tenmonkan Millionation



Recommended model courses: northward and southward, follow your path



Icon refers to recommended time to spend



Access to Kagoshima

Access by air

International flights

Airport	Travel Time
Seoul	90 min
Shanghai	100 min
Taipei	120 min
Hong Kong	180 min
Daegu	80 min

Domestic flights

Airport	Travel Time
Tokyo (Haneda)	2:00
Tokyo (Narita)	2:15
Mt. Fuji Shizuoka	1:45
Chubu (Centrai)	1:30
Osaka (Itami)	1:15
Osaka (Kansai)	1:15
Kobe	1:10
Matsuyama	1:00
Fukuoka	0:55
Tanegashima	0:30
Yakushima	0:35
Kikaijima	1:05
Amami	0:50
Tokunoshima	0:50
Okinoerabujima	1:15
Yoron	1:25
Okinawa (Naha)	1:15



Airport Shuttle Bus (Kagoshima Airport→Kagoshima City)

Buses come every 10 minutes (approx). Travel Time: 40 min to Tenmonakan. Fare:1,250 yen



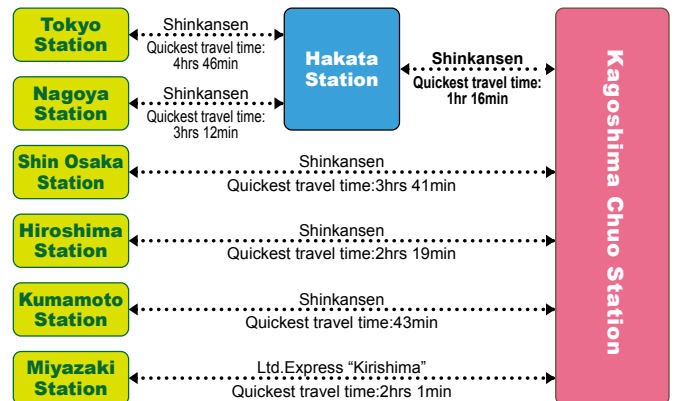
Kagoshima Kotsu ☎+81-99-247-2341
Nangoku Kotsu Airport Shuttle Bus ☎+81-99-58-2341

Map of Kyushu



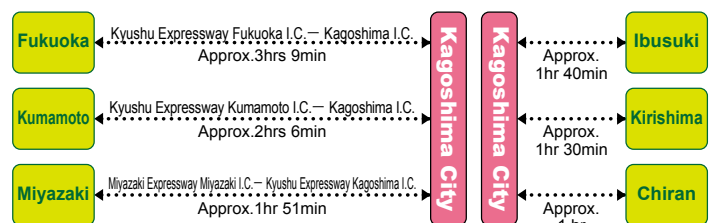
Access by JR Railways

JR Kyushu Information Center ☎+81-50-3786-1717 (8:00~20:00)



Access by car

West Nippon Expressway Company Customer Center ☎+81-6-6876-9031
Ibusuki Skyline Administrative Office ☎+81-99-275-3111



INFORMATION

- Tourism Promotion Division ☎+81-99-216-1510
- KAGOSHIMA CONVENTION & VISITORS BUREAU ☎+81-99-286-4700
- Sightseeing website <http://www.kagoshima-yokanavi.jp/english/>
- E-mail Address kankopromo@city.kagoshima.lg.jp

Jan. 2019